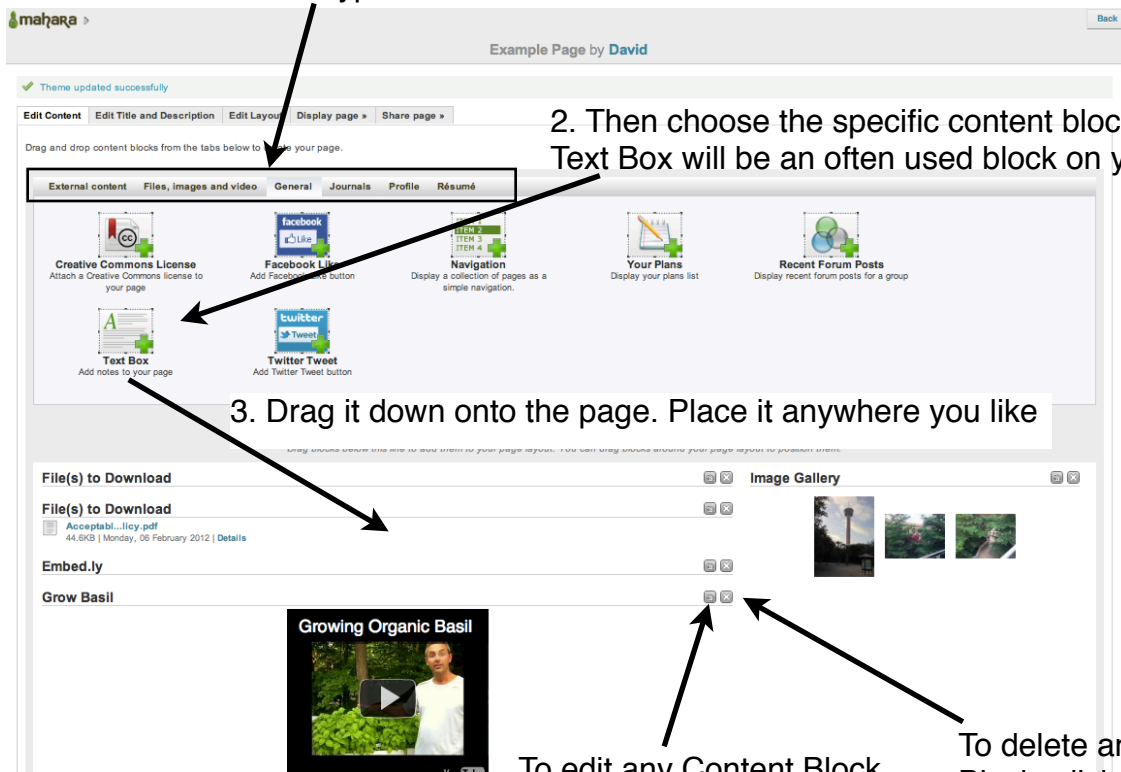


# Adding and Editing Content Blocks

Content Blocks are areas that hold different types of content.

1. Choose the type of content




2. Then choose the specific content block you want. A Text Box will be an often used block on your eportfolio.

3. Drag it down onto the page. Place it anywhere you like

To edit any Content Block, click the "Configure" button on the left

To delete any Content Block, click the "X" button on the right

To move any Content Block, hover over the block until you see the crossed arrows.  Then drag to another place on the page.